

2017 2

2017 6 30

2017 7 19

	003126	003127
	63,426,609.24	36,638,987.45

3

3.1

	2017 4 1	2017 6 30
	A	C
1	299,147.42	95,785.07
2	850,502.58	454,354.12
3	0.0072	0.0072
4	64,966,277.79	37,469,495.83
5	1.0243	1.0227

1

2

3.2

3.2.1

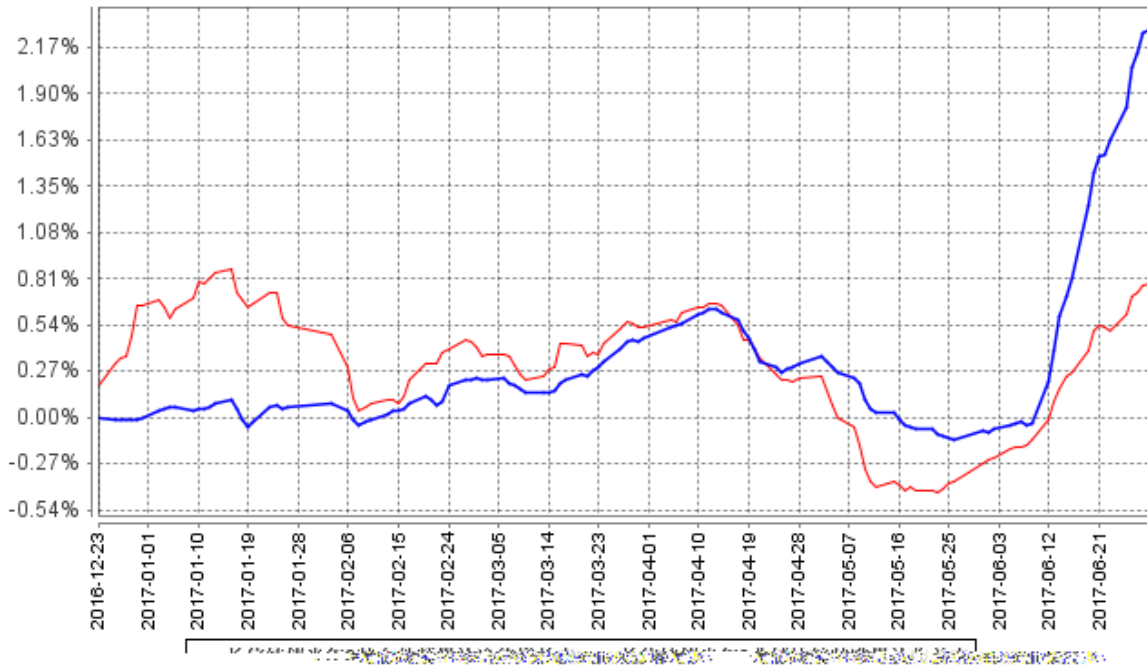
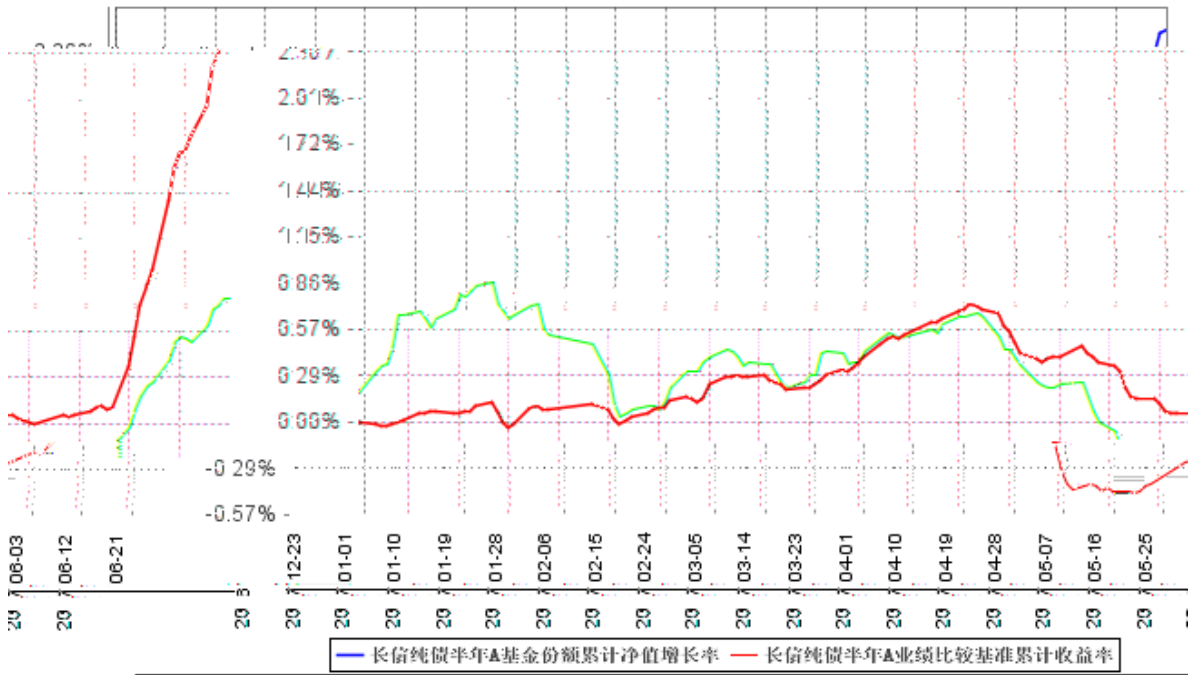
A

三	1.88%	0.09%	0.26%	0.06%	1.62%	0.03%

C

三	1.80%	0.09%	0.26%	0.06%	1.54%	0.03%

3.2.2



1

2016 12 23

2016 12 23 2017 6 30

2

6

4

4.1

		2017 1 12	-	7	2010 7

1

/

2

4.2

4.3

4.3.1

4.3.2

向 5%

4.4

4.4.1

2017

三

20bp

4.4.2 2017 三

三

6

三

4.5

	A	1.0243	1.0243
	A	1.88%	C 1.0227
1.0227		C	1.80%
0.26%			

4.6

7			-	-
8			-	-
9			-	-
10			141,782,033.60	138.41

5.5

1	170210	17 10	200,000	19,750,000.00	19.28
2	1480117	14	100,000	8,515,000.00	8.31
3	1480084	14	100,000	8,464,000.00	8.26
3	1480256	14	100,000	8,464,000.00	8.26
5	1480289	14	100,000	8,462,000.00	8.26

5.6

5.7

5.8

5.9

5.9.1

5.9.2

5.9.3

5.10

5.10.1

5.10.2

5.10.3

1		4,077.32
2		-
3		-
4		2,756,657.95
5		-
6		-
7		-
8		-
9		2,760,735.27

5.10.4**5.10.5****5.10.6****6**

	A	C
	140,350,549.91	64,409,733.24
	299.16	10,741,738.23
:	76,924,239.83	38,512,484.02
"_"	-	-
	63,426,609.24	36,638,987.45

7

7.1

	62,999,000.00
/	0.00
/	0.00
	62,999,000.00
%	99.33

1

2

A

7.2

8

8.1

20%

		20%					
	1	2017 4 1 2017 6 30	62,999,000.00	0.00	0.00	62,999,000.00	62.96%
	-	-	-	-	-	-	-
1							
2							
3							

8.2

9

9.1

1

2

3

4

5

6

9.2

9.3

<http://www.cxfund.com.cn>

2017 7 19