

LOF

2017 1

2017 3 31

2017 4 22

1

2017 4 20

2017 1 1 2017 3 31

2

	LOF	
	163003	
	2016 6 25	
	2,046,545,405.35	
	(LOF) A	(LOF) C
	-	
	163008	163003
	1,861,585,457.18	184,959,948.17

1

2011 6 24

5

2016 6 24

A

B

LOF

2

2017 1 9

LOF

C

A

2017 1 4

LOF

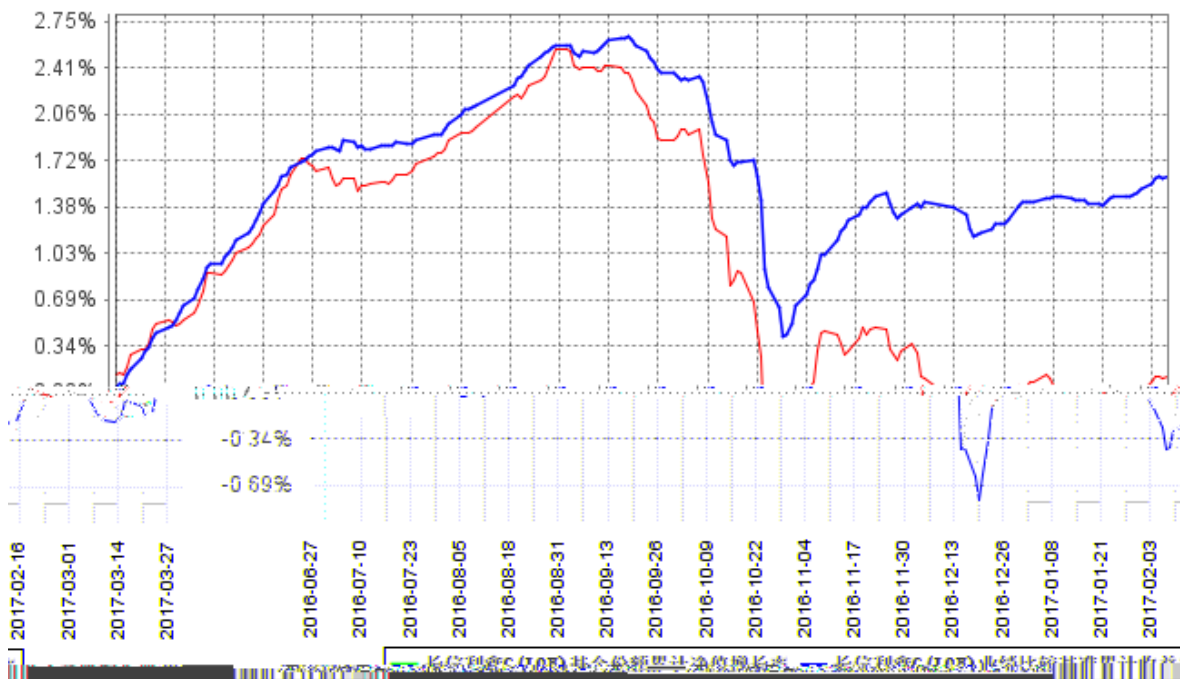
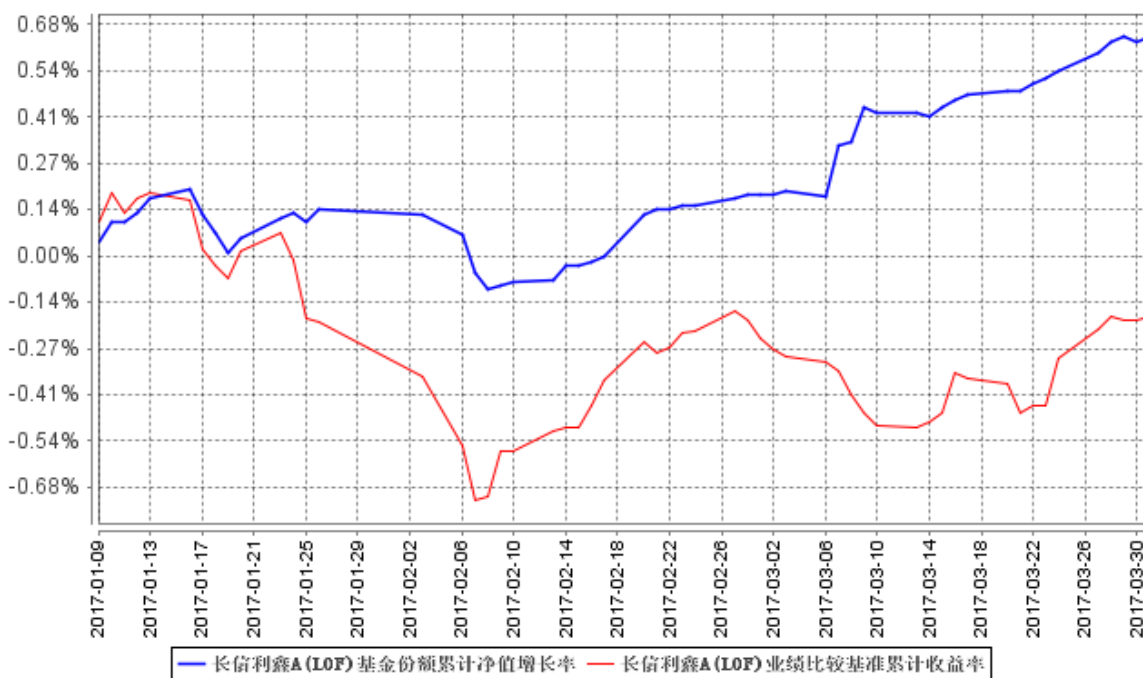
3

3.1

	2017 1 9	2017 1 1
	2017 3 31	2017 3 31
	(LOF)A	(LOF)C

1

3.2.2



1 2017 1 9 LOF
 C A
 2 2016 6 25 (LOF)A 2017 1 9

3
2011 6 24

6
2016 6 25

4

4.1

	LOF	2011 6 24	-	23	EMBA 2004 9 LOF

1

/

2

4.2

4.3

4.3.1

4.3.2

5%

4.4

4.4.1

2017

2

1

CPI

PPI

2

3

MLF

MPA

4.4.2 2017

4.5

	2017	3	31	A	0.8184	1.0184
C			0.8157		1.0157	A
0.64%				-0.18%	C	0.56%
			-0.34%			

4.6

5

5.1

			%
1		-	-
		-	-
2		-	-
3		1, 482, 400, 655. 00	76. 07
		1, 482, 400, 655. 00	76. 07
		-	-
4		-	-
5		-	-
6		400, 867, 681. 30	20. 57
		-	-
7		22, 709, 254. 32	1. 17
8		42, 741, 115. 18	2. 19
9		1, 948, 718, 705. 80	100. 00

5.2

5.2.1

5.2.2

5.3

5.4

1		-	-
2		-	-
3		760, 067, 000. 00	45. 39
		760, 067, 000. 00	45. 39
4		424, 814, 655. 00	25. 37
5		150, 075, 000. 00	8. 96
6		-	-

7		8,998,000.00	0.54
8		138,446,000.00	8.27
9		-	-
10		1,482,400,655.00	88.53

5.5

1	140208	14 08	5,300,000	530,159,000.00	31.66
2	160304	16 04	2,300,000	229,908,000.00	13.73
3	011751026	17 SCP001	1,500,000	150,075,000.00	8.96
4	111794863	17 CD050	800,000	79,112,000.00	4.72
5	111713016	17 CD016	600,000	59,334,000.00	3.54

5.6**5.7****5.8****5.9****5.9.1****5.9.2****5.9.3**

5.10

5.10.1

5.10.2

5.10.3

1		19,195.96
2		-
3		-
4		42,620,191.49
5		101,727.73
6		-
7		-
8		-
9		42,741,115.18

5.10.4**5.10.5****5.10.6**

6

	(LOF) A	(LOF) C
	-	291,040,482.36
	20,529,174,053.03	57,120,596.93
:	18,667,588,595.85	163,201,131.12
"_"	-	-
	1,861,585,457.18	184,959,948.17

7

7.1

7.2

8

8.1

20%

		20%					
1	2017 1 1 2017 2 21	81,971,413.00	0.00	81,971,413.00	0.00	0.00%	
2	2017 3 9 2017 3 31	0.00	689,924,108.02	0.00	689,924,108.02	33.71%	
3	2017 2 22 2017 2 28 2017 3 7	0.00	1,478,947,648.41	1,478,947,648.41	0.00	0.00%	
4	2017 3 1	0.00	2,562,585,255.27	2,562,585,255.27	0.00	0.00%	
5	2017 2 22 2017 2 23	0.00	969,368,376.12	887,396,963.12	81,971,413.00	4.01%	
-	-	-	-	-	-	-	

1	
2	
3	

8.2

9

9.1

1

2

3

LOF

4

5

6

9.2

9.3

<http://www.cxfund.com.cn>

2017 4 22