

2015

2015 12 31

2016 3 26

1

2016 3 24

2015 1 1 2015 12 31

2

2.1

	CX	
	519973	
	2013 11 29	
	1,353,894,462.65	
	A	C
	CX A	CX C
	519973	519972
	802,811,565.28	551,082,897.37

2.2

	1.3+1.1%
	1
	2
	3
	4
	5
	6
	7
	1.3+1.1%

2.3

--	--	--

3.2

3.2.1

3.2.1.1

A

(A)					-	-
	2.83%	0.08%	0.79%	0.00%	2.04%	0.08%
	7.09%	0.08%	1.28%	0.00%	5.82%	0.08%
	13.00%	0.08%	2.54%	0.00%	10.46%	0.08%
2013 11 29 2015 12 31	27.43%	0.16%	5.92%	0.00%	21.51%	0.15%

3.2.1.2

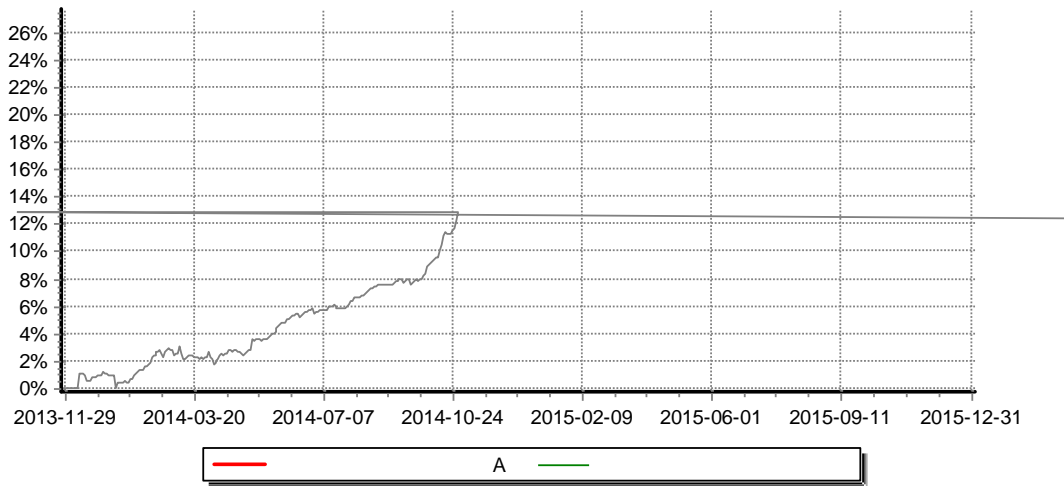
C

(C)					-	-
	2.72%	0.08%	0.79%	0.00%	1.93%	0.08%
	6.87%	0.08%	1.28%	0.00%	5.60%	0.08%
	12.54%	0.08%	2.54%	0.00%	10.00%	0.08%
2013 11 29 2015 12 31	26.33%	0.16%	5.92%	0.00%	20.41%	0.15%

3.2.2

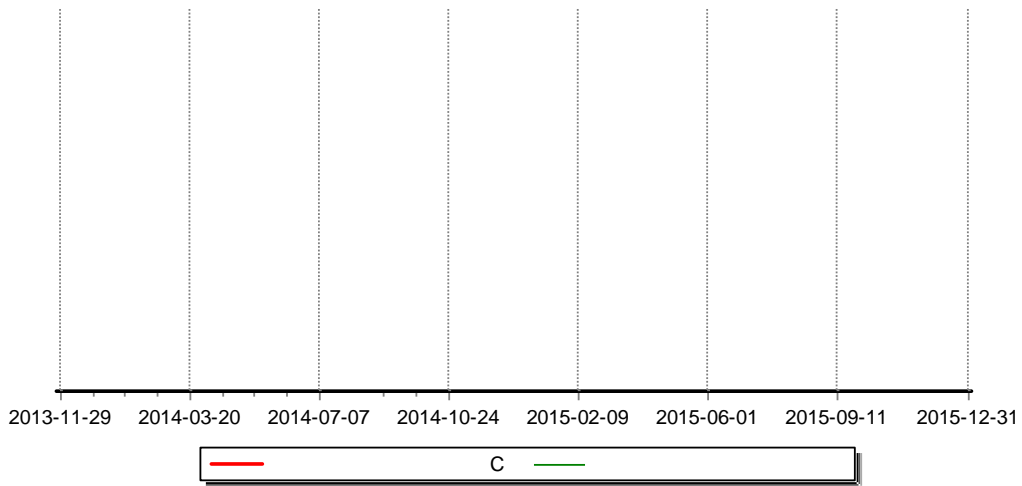
3.2.2.1

A



3. 2. 2. 2

C



1

2013 11 29

2013 11 29

2015 12 31

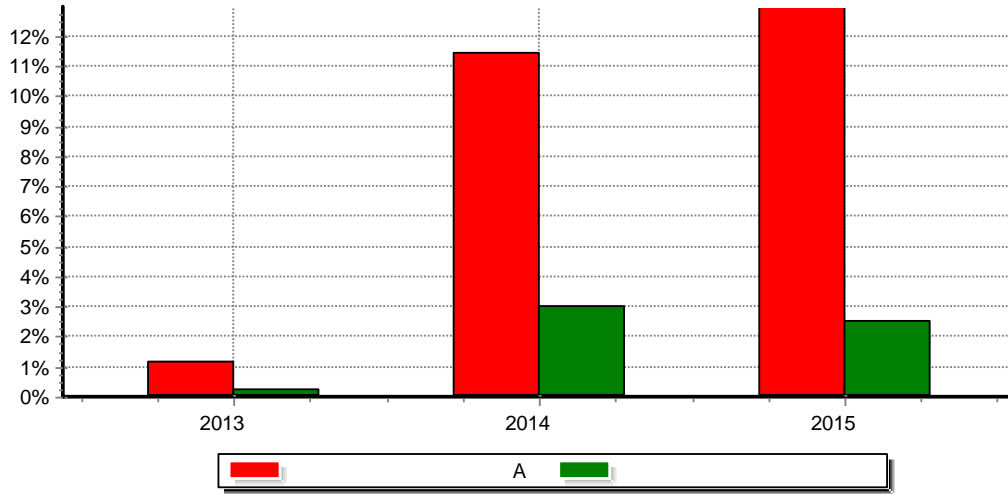
2

6

3. 2. 3

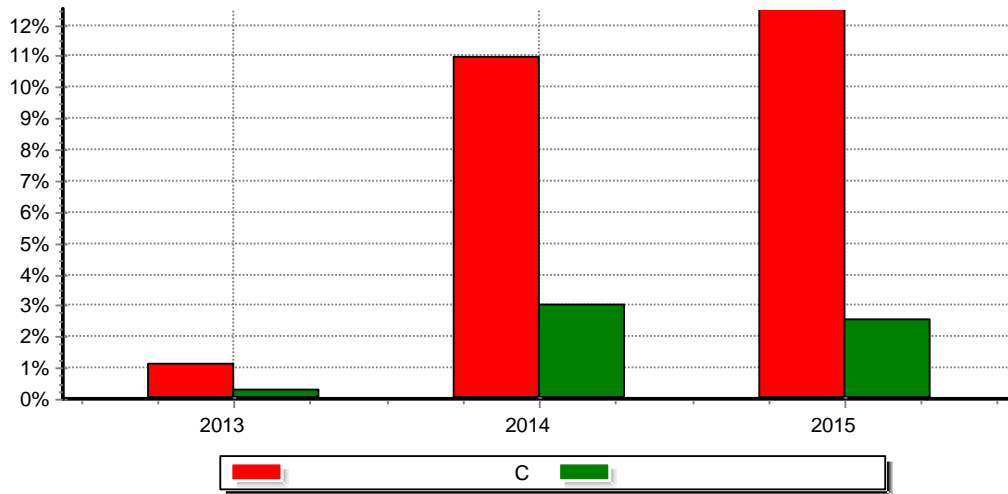
3. 2. 3. 1

A



3. 2. 3. 2

C



2013 11 29 2013

2015

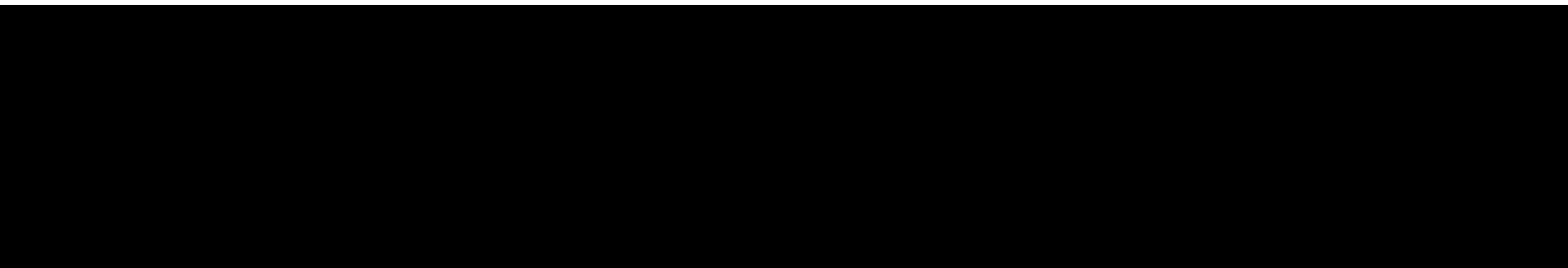
2014	1.05	18,889,985.65	2,642,168.67	21,532,154.32	
2013					
	2.15	38,289,005.29	6,467,003.92	44,756,009.21	

3.3.2

C

	10				
2015	1.05	13,512,992.63			

|



4

4.1

4.1.1

2003 63

1.5

49%

34.33%

16.67%

2015 12 31

30

100

QDII)

LOF

4.1.2

		2013 11 29	2015 3 25	17	

		2014 12 17	-	6	2013

1

/

2

4.2

4.3

4. 3. 1

1

2

1

2

5 1

3

4

5

4. 3. 2

4.3.3

5%

4.4

4.4.1

2015

2015

L

CPI

PPI

2015

4.6

2008 9 12

[2008]38

A			10			
1	2015-12-7	2015-12-7	1.10	19,399,019.64	3,824,835.25	23,223,854.89
			1.10	19,399,019.64	3,824,835.25	23,223,854.89
C			10			
1	2015-12-7	2015-12-7	1.05	13,512,992.63	52,059,943.94	65,572,936.57
			1.05	13,512,992.63	52,059,943.94	65,572,936.57

1

1

100%

2

A

C

3

4

5

4.8

5

5.1

5.2

1

88796791.46

5.3

2015

6

2015

1600151

7

7.1

2015 12 31

	2015 12 31	2014 12 31
	61,942,836.43	4,421,196.56
	13,271,551.29	2,220,694.41
	104,903.40	73,700.60
	1,114,143,779.89	1,432,422,665.03
	1,114,143,779.89	1,432,422,665.03
	200,000,500.00	
		2,994,295.37
	30,131,684.80	34,750,490.07
	142,540,225.51	
	1,562,135,481.32	1,476,883,042.04
	2015 12 31	2014 12 31
	145,000,000.00	616,852,305.80
	910,674.67	4,037,152.26
	514,634.52	
	498,162.40	335,584.58

2015

	142,332.14	95,881.29
	136,772.61	133,585.49
	25,967.47	15,759.03
	26,465.22	248,092.39
	400,131.55	540,000.00
	147,655,140.58	622,258,360.84
	1,353,894,462.65	835,630,156.08
	60,585,878.09	18,994,525.12
	1,414,480,340.74	854,624,681.20
	1,562,135,481.32	1,476,883,042.04

2015 12 31

A

1.0451

802,811,565.28

C

1.0443

551,082,897.37

7.2

2015 1 1 2015 12 31

	2015 1 1 2015 12 31	2014 1 1 2014 12 31
	137,113,628.13	49,909,832.79
1.	88,720,206.18	28,795,296.72
	339,092.79	2,631,292.46
	88,364,260.05	25,651,829.14
		91,625.29
	16,853.34	420,549.83
2.	34,962,150.17	23,030,682.59
	34,962,150.17	23,007,776.27
		22,906.32

3.	-	13,423,362.73	-1,935,782.63
4.			
5.	-	7,909.05	19,636.11
		30,923,657.89	12,927,510.22
1		6,289,786.16	2,378,353.81
2		1,797,081.80	679,529.58
3		2,608,274.98	510,592.28
4		66,539.81	53,530.53
5		19,655,848.15	8,758,819.90
		19,655,848.15	8,758,819.90
6		506,126.99	546,684.12
	-	106,189,970.24	36,982,322.57
	-	106,189,970.24	36,982,322.57

7.3

2015 1 1 2015 12 31

	2015 1 1 2015 12 31		
	835,630,156.08	18,994,525.12	854,624,681.20
		106,189,970.24	106,189,970.24
	518,264,306.57	24,198,174.19	542,462,480.76
-			
1.	1,244,325,492.16	50,096,342.01	1,294,421,834.17
2.	-726,061,185.59	-25,898,167.82	-751,959,353.41
	-	-88,796,791.46	-88,796,791.46
-			

	1,353,894,462.65	60,585,878.09	1,414,480,340.74
	2014 1 1 2014 12 31		
	303,045,141.71	3,564,015.71	306,609,157.42
		36,982,322.57	36,982,322.57
	532,585,014.37	9,876,019.21	542,461,033.58
-			
1.	777,138,734.62	17,067,450.09	794,206,184.71
2.	-244,553,720.25	-7,191,430.88	-251,745,151.13
		-31,427,832.37	-31,427,832.37
-			
	835,630,156.08	18,994,525.12	854,624,681.20

7.1 7.4

7.4

7.4.1

2013

7 11 ()
 ([2013]911)

2013 11 29

A

C

()

2013 10 28 2013 11 22

302,940,982.40

104,159.31

303,045,141.71

1300470

80%

5%

1.3+1.1%

7.4.2

) ([2010]5
XBRL 3 < >
2012 11 16

7.4.3

2015 12 31 2015

7.4.4

7.4.5

7.4.5.1

7.4.5.2

2015 3 27

2015 3 27

0.50%

7.4.5.3

7.4.6

[1998]55

[2002]128

[2004]78

[2012]85

[2015]101

[2005]103

[2008]16

2008 9 18

[2008]1

(1)

(2)

(3)

(4)

20%

2013

1 1

1

1

1

1

1

50%

1

2013

1

1

2015

9 7

25%

2015

9 8

(5)

0.1%

(6)

(

)

7.4.7

7.4.8

7.4.8.1

7.4.8.1.1

7.4.8.1.2

7.4.8.1.3

7.4.8.1.4

7.4.8.1.5

7.4.8.2

7.4.8.2.1

	2015 1 1	2015 12 31	2014 1 1	2014 12 31
		6,289,786.16		2,378,353.81
		2,030,579.05		946,048.23

7.4.8.3 ()

()

7.4.8.4

7.4.8.4.1

7.4.8.4.2

7.4.8.5

	2015 1 1	2015 12 31	2014 1 1	2014 12 31
	61,942,836.43	119,068.64	4,421,196.56	90,073.38

2015 12 31

13,271,551.29 2014 12 31

2,220,694.41

7.4.8.6

7.4.8.7

7.4.9 2015 12 31

7.4.9.1 /

7.4.9.2

7.4.9.3

7.4.9.3.1

7.4.9.3.2

2015	12	31					
			145,000,000.00	2016	1	4	1 5
							/

8

8.1

			%
1			
2		1, 114, 143, 779. 89	71. 32
		1, 114, 143, 779. 89	71. 32
3			
4			
5		200, 000, 500. 00	12. 80
6		75, 214, 387. 72	4. 81
7		172, 776, 813. 71	11. 06
8		1, 562, 135, 481. 32	100. 00

8.2

8.2.1

8.2.2

8.3

8.4

8.4.1

2% 20

8.4.2 2% 20

8.4.3

8.5

			%
1			
2			
3			
4		1, 043, 035, 779. 89	73. 74
5		50, 258, 000. 00	3. 55
6		20, 850, 000. 00	1. 47
7	()		
8			
9		1, 114, 143, 779. 89	78. 77

8.6

					(%)
1	1380270	13 02	500, 000	53, 020, 000. 00	3. 75
2	1480192	14	400, 000	44, 076, 000. 00	3. 12
3	1280195	12	400, 000	33, 844, 000. 00	2. 39
4	1280408	12	400, 000	33, 840, 000. 00	2. 39
5	1580062	14 02	300, 000	32, 043, 000. 00	2. 27

8.7

8.8

8.9

8.10

8.11

8.12

8.12.1

8.12.2

8.12.3

1		104,903.40
2		
3		
4		30,131,684.80
5		142,540,225.51
6		
7		
8		
9		172,776,813.71

8.12.4

8.12.5

8.12.6

9

9.1

	()					
A	1,272	631,141.17	620,993,861.06	77.35%	181,817,704.22	22.65%
C	5,585	98,671.96	2,038,030.46	0.37%	549,044,866.91	99.63%
	6,857	197,447.06	623,031,891.52	46.02%	730,862,571.13	53.98%

9.2

	A	9,745.45	0%
	C	305.80	0%
		10,051.25	0%

9.3

	A	0
	C	0
		0
	A	0
	C	0
		0

10

	A	C
(2013 11 29)	205,068,134.62	97,977,007.09
	211,125,953.28	624,504,202.8
	671,609,283.20	572,716,208.96
	79,923,671.20	646,137,514.39
	802,811,565.28	551,082,897.37

11

11.1

11.2

11.2.1

2015 4 28

2015

7 21

2015 4 29

11.2.2

11.3

11.4

11.5

60,000.00

2

11.6

11.7

	2	3,361,381,331.45	100.00%	25,260,172,000.00	100.00%	-	-	
	2	-	-	-	-	-	-	
	2	-	-	-	-	-	-	

1

2

2

<1998>29

[2007]48

1

1

2

3

4

2