



长信利息收益开放式证券投资基金2010年年度报告

2010年12月31日

基金管理人：长信基金管理有限责任公司

基金托管人：中国农业银行股份有限公司

送出日期：2011年03月31日

.....	2
.....	5
.....	8
.....	13
.....	18
.....	19
.....	21
.....	52
.....	56
.....	57

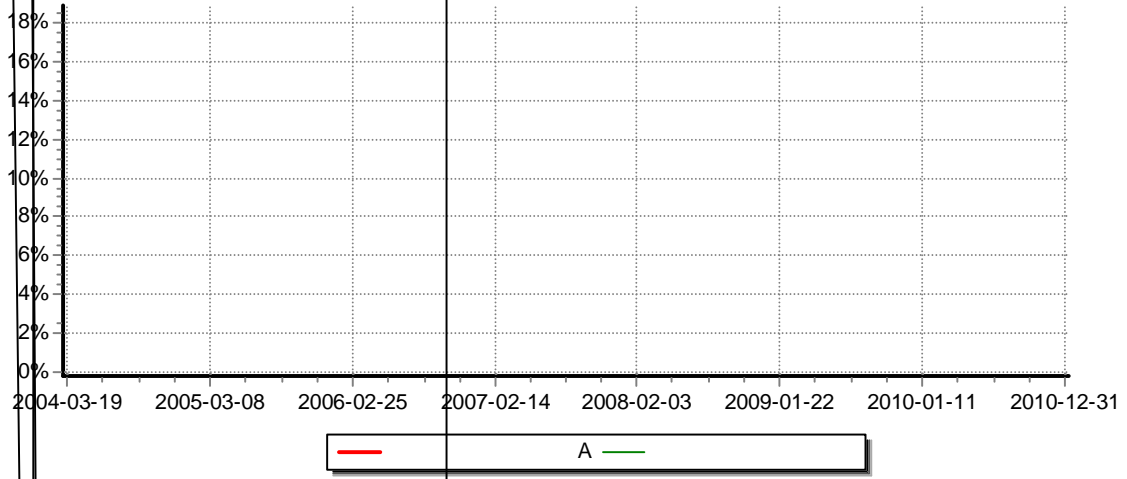
..... 58

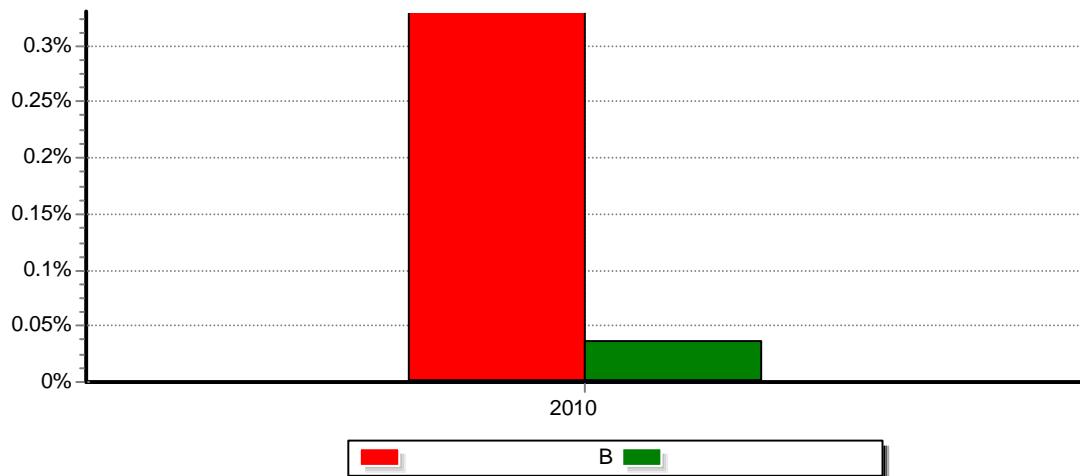
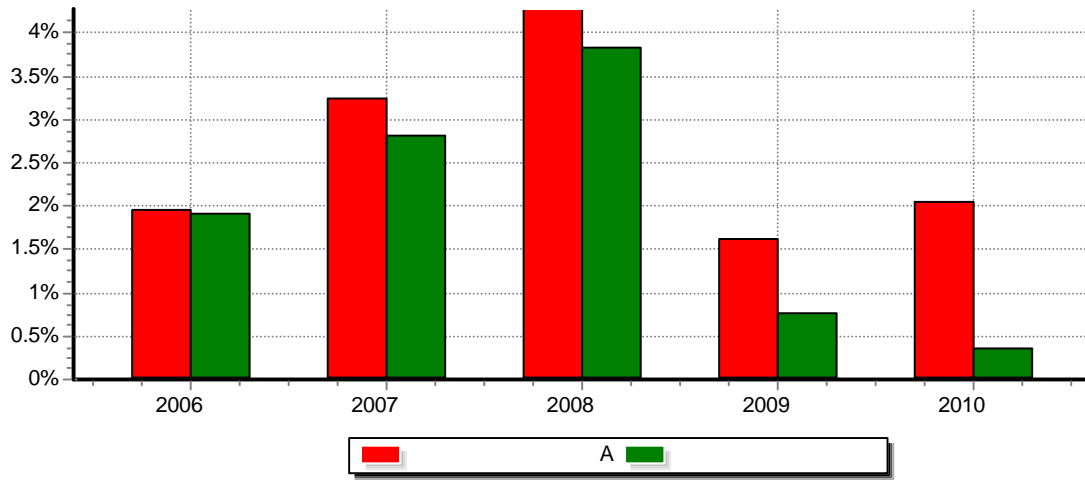
..... 64



3.1.1	2010		2009	2008
	A	B		
	73,008,035.88	9,881,893.49	86,815,679.11	206,063,050.48
	73,008,035.88	9,881,893.49	86,815,679.11	206,063,050.48
	2.05%	0.33%	1.62%	4.28%
3.1.2	2010	2010	2009	2008
	772,120,475.58	3,754,754,193.08	9,902,746,179.49	10,463,867,119.32
	1.0000	1.0000	1.00	1.00
3.1.3	2010	2010	2009	2008
	18.70%	0.33%	16.31%	14.45%

--	--	--	--	--	--	--





			47,167,987.54
			18,831,842.36
			5,706,618.83
			14,266,547.21
			7,782,199.71
			7,782,199.71
			580,779.43
			86,815,679.11
			86,815,679.11



	638,287.93	580,779.43

	2010 12 31			2009 12 31	
	A	B			
				200,000,000.00	2.02%
	1,671,142.96		0.22%	14,515,144.47	0.15%
	746.43		0.00%	731.68	0.00%



--	--	--	--	--	--

2010 12 31	1	1 3	3 1	1 5	5		
	1,222,467,749.87		-	-	-	-	1,222,467,749.87
	-	-	-	-	-	3,766,363.64	3,766,363.64
	-	-	-	-	-	300,000.00	300,000.00
	119,897,399.04	620,096,586.79	1,131,687,235.46	-	-	-	1,871,681,221.29
	1,636,695,135.04	100,000,270.00	-	-	-	-	1,736,695,405.04
	-	-	-	-	-	-	-
	6,534,528.37	17,256,704.76	10,336,805.76	-	-	-	34,128,038.89
	-	-	-	-	-	-	-
	2,985,594,812.32	737,353,561.55	1,142,024,041.22	-	-	4,066,363.64	4,869,038,778.73
	324,999,267.50	-	-	-	-	-	324,999,267.50
	10,722,725.67	-	-	-	-	-	10,722,725.67
	1,009,408.38	-	-	-	-	-	1,009,408.38
	305,881.34	-	-	-	-	-	305,881.34
	157,816.40	-	-	-	-	-	157,816.40
	70,771.16	-	-	-	-	-	70,771.16
	253,600.00	-	-	-	-	-	253,600.00
	57,769.86	-	-	-	-	-	57,769.86
	4,117,369.76	-	-	-	-	-	4,117,369.76
	469,500.00	-	-	-	-	-	469,500.00
	342,164,110.07	-	-	-	-	-	342,164,110.07
	2,643,430,702.25	737,353,561.55	1,142,024,041.22	-	-	4,066,363.64	4,526,874,668.66

2009 12 31	1	1 3	3 1	1 5	5		
	705,276,985.33	1,000,000,000.00	-	-	-	-	1,705,276,985.33
	-	-	-	-	-	2,800,300,000.00	2,800,300,000.00
	-	-	-	-	-	300,000.00	300,000.00
	40,016,608.60	290,144,087.37	1,770,499,419.17	-	199,577,130.00	-	2,300,237,245.14
	3,411,388,837.07	-	-	-	-	-	3,411,388,837.07
	-	-	-	-	-	-	-
	3,846,218.69	6,848,088.33	6,940,523.54	-	-	-	17,634,830.56
	180,934,143.36	-	-	-	-	-	180,934,143.36
	4,341,462,793.05	1,296,992,175.70	1,777,439,942.71	-	199,577,130.00	2,800,600,000.00	10,416,072,041.46
	417,051,471.47	-	-	-	-	-	417,051,471.47
	90,769,503.50	-	-	-	-	-	90,769,503.50
	1,203,191.25	-	-	-	-	-	1,203,191.25
	364,603.44	-	-	-	-	-	364,603.44
	911,508.51	-	-	-	-	-	911,508.51
	83,727.78	-	-	-	-	-	83,727.78
	253,600.00	-	-	-	-	-	253,600.00
	14,000.90	-	-	-	-	-	14,000.90
	2,337,740.12	-	-	-	-	-	2,337,740.12
	336,515.00	-	-	-	-	-	336,515.00
	513,325,861.97	-	-	-	-	-	513,325,861.97
	3,828,136,931.08	1,296,992,175.70	1,777,439,942.71	-	199,577,130.00	2,800,600,000.00	9,902,746,179.49

			1-5			

	3,378,224,236.88	1,131,687,235.46	-	-	16,963,196.32	4,526,874,668.66
			1-5			
	1,705,276,985.33	-	-	-	-	1,705,276,985.33
	2,800,300,000.00	-	-	-	-	2,800,300,000.00
	300,000.00	-	-	-	-	300,000.00
	529,737,825.97	1,770,499,419.17	-	-	-	2,300,237,245.14
	3,411,388,837.07	-	-	-	-	3,411,388,837.07
	-	-	-	-	-	-
	-	-	-	-	17,634,830.56	17,634,830.56
	-	-	-	-	180,934,143.36	180,934,143.36
	8,447,003,648.37	1,770,499,419.17	-	-	198,568,973.92	10,416,072,041.46
	417,051,471.47	-	-	-	-	417,051,471.47
	-	-	-	-	90,769,503.50	90,769,503.50
	-	-	-	-	1,203,191.25	1,203,191.25
	-	-	-	-	364,603.44	364,603.44
	-	-	-	-	911,508.51	911,508.51
	-	-	-	-	-	-

	()					
A	15,362	50,261.72	51,584,919.23	6.68%	720,535,556.35	93.32%
B	87	43,158,094.17	3,474,318,366.99	92.53%	280,435,826.09	7.47%
	15,449	293,020.56	3,525,903,286.22	77.89%	1,000,971,382.44	22.11%

